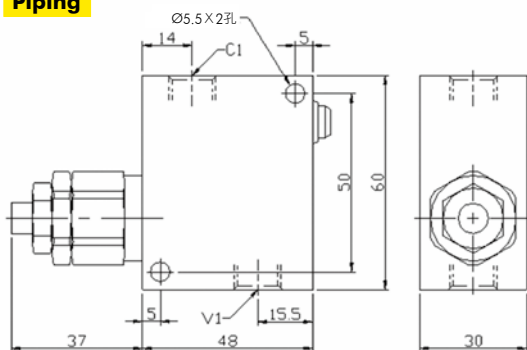


# VSQ Series

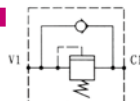
## 油壓順序閥

### Piping Mounting and Manifold Mounting

#### Piping



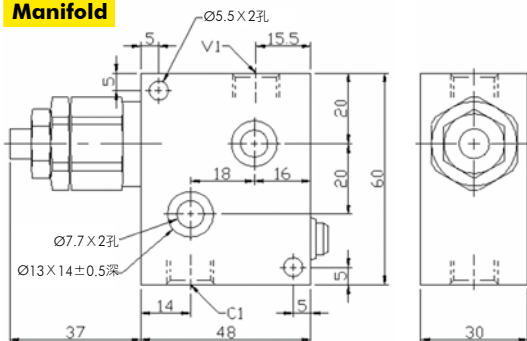
#### Symbol



#### Description

1. This valve is suitable for second circuit which must be low pressure and low flow rate
2. The active pressure of second circuit can be adjusted by an adjustable nut.
3. Including one filter which is setting below 50 $\mu$ m
4. Non-leaking seal design
5. Two mounting type: piping and manifold

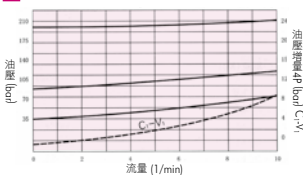
#### Manifold



#### Ordering example (訂購範例) :

**VSQ 10 H - G**  
 Base No. H: High pressure L: Low pressure  
 Mounting Type Blank: Piping G: Manifold

#### Manifold



#### Technical Parameter

Model No. 型號	Max. Pressure (bar) 最大壓力	Adjust Range (bar) 調整範圍	Increase (bar/ coil) 增量值	Setting pressure (bar) 設定壓力	Max. Flow Rate (L/Min) 最大流量	Weight (kg) 重量
VSQ-10-H	210	50-210	48	200	10	0.3
VSQ-10-L	100	5-100	30	100	20	0.3